

# Analysis of Electromagnetic Scattering from Complicated Objects Using Nonconformal IE-DDM

X. Wei, J. Hu, M. Tian, R. Zhao, M. Jiang, Z. P. Nie  
 Dept. of Microwave Engineering,  
 University of Electronic Science and Technology of China  
 Cheng du, 610054, China  
 hujun@uestc.edu.cn

**Abstract**-This paper extends the integral equation domain decomposition method (IE-DDM) with Robin Transmission Condition(Robin TC) to the electromagnetic analysis of general objects of arbitrary shape, even for composite conducting-dielectric structures. Meanwhile, nonconformal mesh processing is formulated for the IE-DDM. The method is based on the CFIE-GCFIE integral equation formulation. First, we present the IE-DDM formulations for composite conducting-dielectric objects. Then, the nonconformal mesh processing is introduced into the IE-DDM. And last, the numerical results are also given to prove the validity of the present method.

## I. INTRODUCTION

The integral equation (IE) method is a popular tool which has many important applications e.g., in the radar technology, antenna design and microwave engineering. An efficient and stable integral equation framework for solving scattering problem of complex and multi-scale platform is a great need, especially for composite conducting-dielectric structures. And lots of studies have been conducted by many researchers [1-5]. Several methods based on IE have been proposed, including surface coupled integral equations method [6], hybrid volume-surface integral equations method [7]. IE method can analyze conducting-dielectric structures of arbitrary shape by using the combination of electric-field integral equation(EFIE) for PEC part and other kind SIEs for dielectric part. The popular methods such as EFIE-PMCHWT [8-9] or EFIE-JMCFIE still remain challenges on the treatment of junctions between conducting part and dielectric part. The complex combinations of integral equations and conformal mesh processing are uneasy for sophisticated models, even though EFIE-CFIE-PMCHWT [10-11] formulation was present for solving special junction parts. Surface integral equation domain decomposition method (IE-DDM) [12-13] for field problem of composite object with homogeneous material properties performs well while a new generalized combined field integral equation is also employed for IE-DDM, which leads to well-conditioned matrix equations.

In this paper we analyze conducting object and composite conducting-dielectric structures using IE-DDM that makes treatment of junctions uncomplicatedly. Moreover, nonconformal interpolation method [14] is applied in it to make mesh processing more flexible.

The rest of this paper is organized as follows. In Section 2 the formulations about IE-DDM and general combined field integral equation (GCFIE) are given. Nonconformal interpolation method is described in Section 3. In Section 4 numerical results are shown to prove the validity of this method, followed by the conclusions.

## II. IE-DDM FORMULATIONS

In this section, firstly we present the basic theorem of integral equation domain decomposition method. Then GCFIE will be discussed in IE-DDM framework when analyzing the scattering field of a composite conducting-dielectric structure.

### A. Framework of IE-DDM

We consider that the whole computational domain  $\Omega$  is divided into some non-overlapping subdomains  $\Omega_i$  ( $i = 1, \dots, N$ ) (Fig.1),  $\Omega = \cup_{i=1}^N \Omega_i$ .

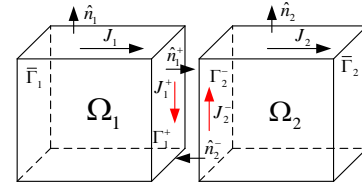


Fig.1. Non-overlapping IE-DDM Scheme

$\overline{\Gamma}_i$  and  $\overline{\Gamma}_{ij}$  are the original as well as new interface respectively, that is to say

$$\begin{aligned} \overline{\Gamma}_i &= \partial\Omega_i \cap \partial\Omega \\ \overline{\Gamma}_{ij} &= \partial\Omega_i \cap \partial\Omega_j \end{aligned} \quad (1)$$

While applying the idea above to electromagnetic scattering model, we can get the basic formulations for each subdomain  $\Omega_i$ , (2.1) for  $\overline{\Gamma}_i$  and (2.2) for  $\overline{\Gamma}_{ij}$ .



$$X_i = \{v_m \mid v_m \in T_i, v_i \in \Gamma_{ij}, 1 < m < \#(T_i \cap \Gamma_{ij})\} \quad (5)$$

$$Y_j = \{u_m \mid u_m \in T_j, u_m \in \Gamma_{ji}, 1 < m < \#(T_j \cap \Gamma_{ji})\}$$

Then, we can get a set of elements  $P_{ij}$  by projecting space  $X_i$  and  $Y_j$  with each other, that  $P_{ij} = \{p_m \mid p_m \in (X_i \cap Y_j)\}$  and  $v_p = \sum_{i=1}^m p_i, v_p \in X_i$ .

The projection set  $P_{ij}$  between nonconforming space makes the mortar element method easily. The Robin TC formulation in Galerkin testing is as:

$$\alpha \left( \int_{\Gamma_{ij}^-} \bar{w}_i^k(\vec{r}) \cdot \bar{E}_i^s(\vec{v}_i^l(\vec{r})) \Big|_{\Gamma_{ij}^-} d\vec{r} - \sum_{j=1, j \neq i}^N \int_{\Gamma_j^+} \bar{w}_i^k(\vec{r}) \cdot \bar{E}_j^s(\bar{p}_{ij}(\vec{r})) \Big|_{\Gamma_j^+} d\vec{r} \right) \quad (6)$$

$$+ (1-\alpha) \left( \int_{\Gamma_j^+} \bar{w}_i^k(\vec{r}) \cdot (\vec{n}_i^+ \times \bar{H}_i^s(\vec{v}_i^l(\vec{r}))) \Big|_{\Gamma_j^+} d\vec{r} - \int_{\Gamma_j^+} \bar{w}_i^k(\vec{r}) \cdot \vec{v}_i^l(\vec{r}) \Big|_{\Gamma_j^+} d\vec{r} \right)$$

$$+ (1-\alpha) \left( \sum_{j=1, j \neq i}^N \int_{\Gamma_j^+} \bar{w}_i^k(\vec{r}) \cdot (\vec{n}_i^+ \times \bar{H}_j^s(\bar{p}_{ij}(\vec{r}))) \Big|_{\Gamma_j^+} d\vec{r} \right) = 0$$

Where,  $\bar{w}_i^k$  is testing function and  $\vec{v}_i^l$  is original basic function in  $\bar{\Gamma}_{ij}^-$ ,  $\bar{p}_{ij}$  is basic function which belongs to  $P_{ij}$ , projecting space. In (6), double integral terms in scattering fields can be done in original basic functions and surface current terms, single integral term, should be expanded in projecting space.

#### IV. NUMERICAL RESULTS

In this section the present method is verified and compared with other available data. A coated PEC sphere and two aircrafts models are investigated.

##### A. Coated PEC sphere model

Consider the case of a perfectly conducting sphere with two different materials, which are permittivity 6.0 and permittivity 4.0 respectively. A combination of three parts that two are dielectric and another is PEC is set for model,  $\lambda_0$  is wavelength in free space. The bistatic RCS is calculated with 38,835 unknowns and result is correspond to MIE result, in Fig.4.

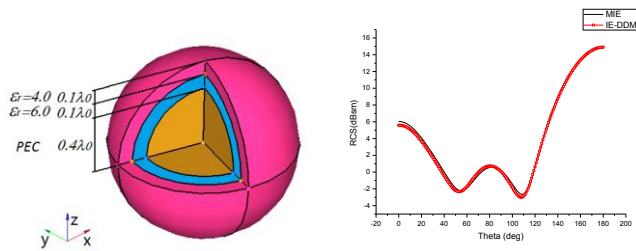


Fig.4. Domain decomposition for coated PEC sphere model

##### B. EM scattering from simplified aircraft model

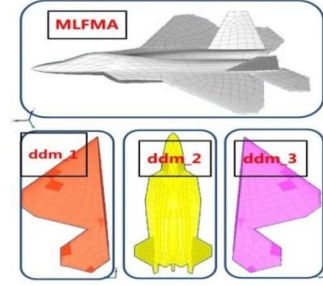


Fig.5. Domain decomposition for simplified aircraft model

In order to show the efficiency and accuracy of nonconformal IE-DDM, the bistatic RCS of a simplified PEC aircraft model is solved. An incident plane wave at 1.0 GHz frequency illuminates from  $\theta = 90^\circ, \phi = 0^\circ$ , the whole model is divided into 3 parts showed in Fig.4. The number of unknowns by the MLFMA and IE-DDM is about 1.6 million and 1.38 million respectively. A good agreement between MLFMA and IE-DDM is also achieved in Fig.5. The SAI preconditioner is used to accelerate the iteration of matrix equation.

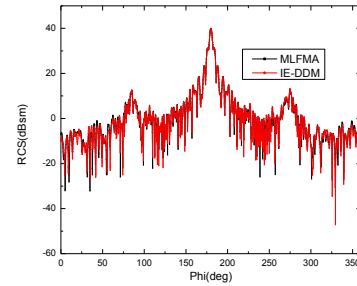


Fig.6. Bistatic RCS for simplified aircraft model

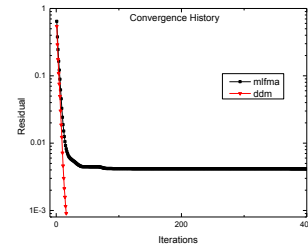


Fig.7. The convergence of IE-DDM and MLFMA for simplified aircraft model

	Memory/GB	CPU Time/h:m
MLFMA	21.6	22:10
IE-DDM	18	15:40

Table 1: Computational Statics of IE-DDM and MLFMA

##### C. Simplified helicopter model

As shown in Fig. 7, the entire model is divided into 6 closed regions. Each region is meshed independently according to geometry complexities and available computational resources. Due to the non-conformal feature of the proposed IE-DDM, each of the sub-regions can be meshed independently.

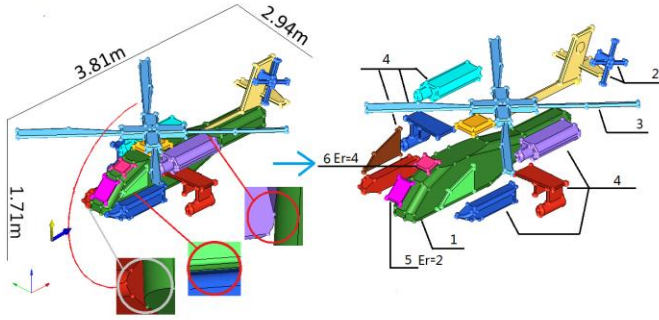


Fig.8.Geometry Model of a simplified helicopter  
(Incident wave from  $\theta=90^\circ, \phi=0^\circ$  in 1.5GHz frequency.)

Part 5 and 6 are dielectric structures, their permittivities are 2.0 and 4.0 respectively, while others are all PEC structures. Then the results of scattering fields by different parts of this model are given in Fig.8.

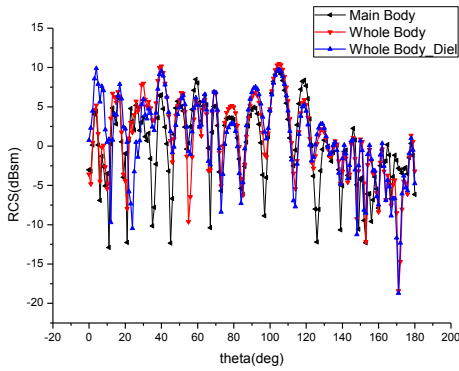


Fig.9.Results comparison of different combined model  
(Main and Whole Body are all PEC Parts combination, difference in part 4, while Whole Body\_Diel has dielectric structure substituted for PEC, part 5  $\epsilon_r=2.0$  and part 6  $\epsilon_r=4.0$ )

Part	1	2	3	4	5	6	Total
Unknowns	61,389	8,148	28,335	63,510	3,684	5,520	170,586

Table 2: Unknowns of each Part

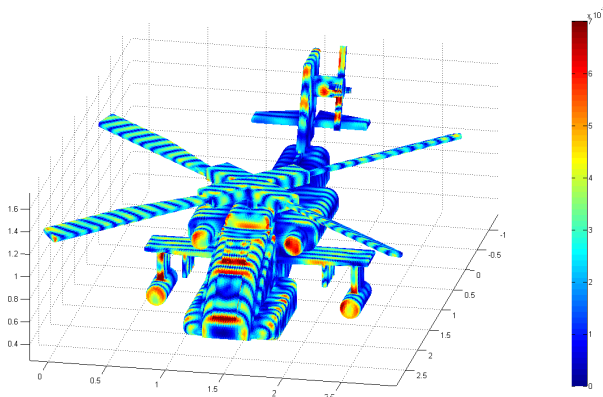


Fig. 10.The current distribution of helicopter model

## V. CONCLUSION

In this paper, nonconformal IE-DDM is applied for analysis of electromagnetic scattering from complicated conductor and composite objects. The great benefit of this framework is that it divides the computational domain into subdomains independently, simplifies model processing and reduces the heavy burden of mesh generation. Moreover, it improves greatly the property of matrix, can achieve stable and accurate solution of complicated multi-scale objects in real world.

## ACKNOWLEDGEMENT

This work was supported by the National Science Foundation of China (NSFC: No.61271033).

## REFERENCES

- [1] W. C. Chew, J. M. Jin, E. Michielssen and J. Song, "Fast and Efficient Algorithms in Computational Electromagnetics," Boston, MA: Artech House, 2001.
- [2] Branko M. Kolund zi ja, "Electromagnetic Modeling of Composite Metallic and Dielectric Structures," *IEEE Trans. Antennas Propag.*, vol. 47, no. 7, pp. 1021–1032, July. 1999.
- [3] J. L. Yin, J. Hu, and Z. Nie, "IE-FFT solution of volume-surface integral equation for composite conducting-dielectric objects," in Proceedings of the International Conference on Microwave Technology and Computational Electromagnetics, pp. 414–417, 2009.
- [4] F. Vipiana, M. A. Francavilla, and G. Vecchi, "EFIE modeling of high-definition multiscale structures," *IEEE Trans. Antennas Propag.*, vol. 58, no. 7, pp. 2362–2374, Jul. 2010.
- [5] J. Liu and J. Jin, "Scattering analysis of a large body with deep cavities," *IEEE Trans. Antennas Propag.*, vol. 51, no. 6, pp. 1157–1167, Jun. 2003.
- [6] Putnam, J. M. and L. N. Medgyesi-Mitschang, "Combined field integral equation for inhomogeneous two- and three-dimensional bodies: The junction problem," *IEEE Trans. Antennas Propag.*, vol. 39, No. 5, 667–672, May 1991.
- [7] W. B. Ewe, L. W. Li, and M. S. Leong, "Fast solution of mixed dielectric/conducting scattering problem using volume-surface adaptive integral method," *IEEE Trans. Antennas Propag.*, vol. 52, no. 11, pp. 3071–3077, Nov. 2004.
- [8] Chen, Q. and D. R. Wilton, "Electromagnetic scattering by three dimensional arbitrary complex material/conducting bodies," *IEEE AP Symposium 1990*, Vol. 2, 590–593, 1990.
- [9] Arvas, E. A. Rahhal-Arabi, A. Sadigh, and S. M. Rao, "Scattering from multiple conducting and dielectric bodies of arbitrary shape," *IEEE Antennas and Propagation Magazine*, Vol. 33, No. 2, 29–36, April 1991.
- [10] Y. Chu. and W. C. Chew, "A multi-level fast multipole algorithm for low-frequency scattering from a composite object," *IEEE Antenna Pmpagot.*, vol. 1, pp. 43–46. Columbus, OH, USA 2003.
- [11] Pasi Yla-Oijala and Matti Taskinen, "Electromagnetic Modelling of Composite Structures with Surface Integral Equations of the Second Kind," Computational Electromagnetics Workshop 2007. Zmir, pp. 54 – 58, Aug. 2007.
- [12] Zhen Peng, Kheng-Hwee Lim, Jin-Fa Lee, "Nonconformal Domain Decomposition Methods for Solving Large Multiscale Electromagnetic Scattering Problems," *Proceedings of the IEEE.*, Vol. 101, No. 2, February 2013.
- [13] Zhen Peng, Kheng-Hwee Lim; Jin-Fa Lee, "Computations of Electromagnetic Wave Scattering from Penetrable Composite Targets using a Surface Integral Equation Method with Multiple Traces," *IEEE Trans. Antennas Propag.*, vol. 61, no. 1, pp. 256 – 270, Jan. 2013.
- [14] Y. Achdou, C. Japhet, Y. Maday, and F. Nataf. "A new cement to glue nonconforming grids with Robin interface conditions: the finite volume case." *Numer. Math.*, 92(4):593 – 620, 2002.