

# Travel and Accommodation Guide

## ◆ ABOUT CHENGDU

Chengdu is the largest city in the Southwest China. It is also one of the centers in China in science and technology, business, finance and one of the hubs of transportation and communication. In the first half of 2016, the GDP of Chengdu exceeded 559.02 billion Yuan with annual growth rate of more than 7.5 percent, which is 0.8 percent higher than the national average. 271 companies of the *Fortune 500* have branches in Chengdu. 12 countries set up their consulates, including the United States, German and Australia. Also, there are more than 80 direct international flights between Chengdu and foreign cities such as San Francisco, London, Melbourne, Moscow and Abu Dhabi.

Chengdu has its unique cultural background and nature beauties. On the vast and fertile Chengdu plain, there are many historical sites that tell its past. San-xing-dui museum presents a complex mix of the ancient city, kingdom, and Shu; it is one of the ten most valuable archeological discoveries in China. Jin-sha Ruin is another important remain that was discovered in recent years. Du-jiang-yan is the irrigation system that was built about 2000 years ago and still contributes to economics and life of Chengdu. Wang-jian tomb, Wuhou temple, Dufu's Cottage, Kuan-zhai Alley, as well as the Chengdu Research Base of Panda Breeding are the most popular tourist sites. In south Chengdu lies a modern high-tech zone that include the Asian's largest single shopping mall, the Global Center.

In a few hours of drive from Chengdu city, there are many beautiful and impressive natural scenery sights, such as Er-mei mountain, Qing-cheng mountain, Xi-ling-xue-shan mountain, Jiuzhai Valley. They are nationally well-known and attractive tourist sites.



## ◆ WORKSHOP VENUE-Academic Exchange Center of UESTC (Sha-he Campus)



The workshop will be held at the Academic Exchange Center of the UESTC (the University of Electronic Science and Technology of China). It is located at No.4, Section 2, North Jianshe Road, Chengdu. In Chinese, it is 电子科技大学沙河校区, 建设北路2段4号, 成华区. It is about 20 minutes of drive from/to Chengdu railway station and 45 minutes from to Chengdu Shuangliu International Airport. The map of the university is shown below.

The UESTC was founded in 1956 with the combining of electronic divisions of three Chinese universities, Shanghai

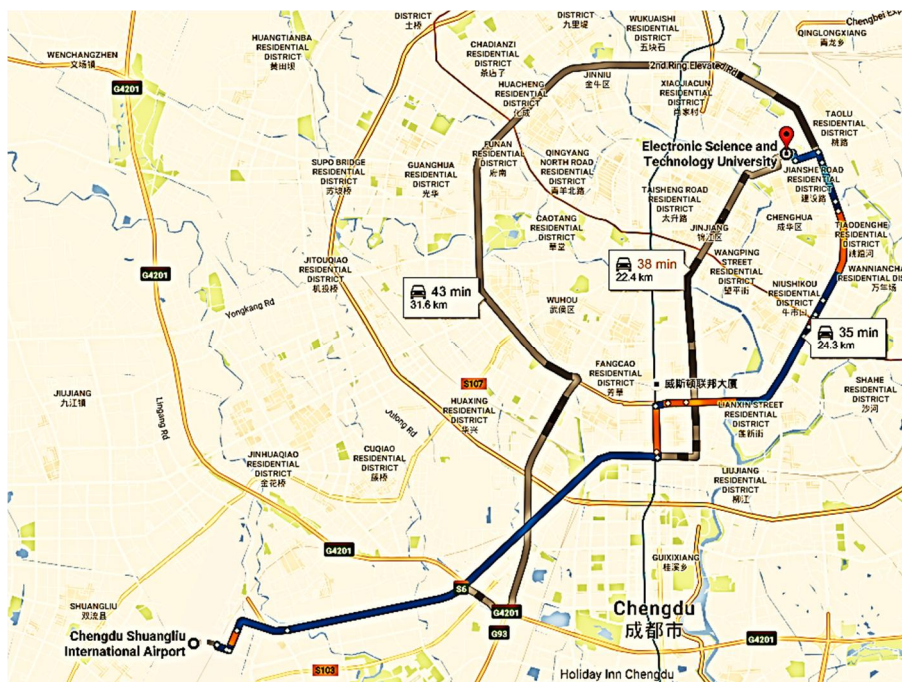
Jiaotong University, Southeast University (formerly Nanjing Institute of Technology) and South China University of Technology (formerly South China Institute of Technology). In 1997 it was selected by Chinese central government as one of the top universities in the "Project 211" program; the program aimed to develop 100 first-class universities and several key research concentrations for the 21st century. In 2001, UESTC was again by Chinese central government selected as one of a few universities of Project 985, receiving special supports for developing world-class research intensive universities.

◆ **TRANSPORTATION AND ACCOMODATION**

**Address of the Workshop Venue**

The address of the workshop venue is No.4, Section 2, North Jianshe Road, Chengdu, Sichuan Province. In Chinese, 电子科技大学沙河校区, 建设北路2段4号, 成华区. For those who do not speak Chinese, it is recommended to print and carry the above address in Chinese.

The map below shows the address and its relative position to the Chengdu Shuangliu International Airport.



**Travel to Chengdu by Air**



The major airport is Chengdu Shuangliu International Airport. It offers many direct flights to Chinese and international cities. The taxi from the airport to the UESTC Shahe Campus costs about ¥ 80 yuan in Chinese currency (ren-min-bi) and takes about 45 minutes. Make sure that you are going Sha-he campus of the UESTC since the University has other different campuses.

## Travel by Train

There are three major railway stations: (1) Chengdu North Railway Station (2) Chengdu East Railway station (3) Chengdu South Railway Station. From the stations, you may follow the instructions below to reach the workshop venue.



### From Chengdu North Railway Station

Take Bus No. 34 at “North Railway Bus Stop (火车北站公交站)” and get off at “East Section 1 of Yi-huan Road (一环路东一段) Stop”, and then walk about 500 meter. The bus ticket is ¥ 2.00 yuan in Chinese currency. The bus takes 20 minutes. If you take a taxi, it costs about ¥ 20.00.



### From Chengdu East Railway Station

Take Bus No. 2 at “Chengdu East Railway Stop (成都东客站)”, get off at “North Jianshe Road of Erhuan Road Stop 二环建设北路口站”, and then walk about 600m. The bus ticket is ¥ 2.00 yuan in Chinese currency. The bus takes 40 minutes. If you take a taxi, it costs about ¥ 25.00.



### From Chengdu South Railway Station

Take Bus No.49 at “South Railway Stop 火车南站公交站”, get off at “Fuqing Overpass of Yihuan Road 府青路一环路立交桥站”, then walk about 500m. The bus ticket ¥ 2.00 yuan in Chinese currency. The bus takes 40 minutes. If you take a taxi, it costs about ¥ 28.00.

## Hotels

### The University of Electronic Science and Technology of China Hotel ★★★

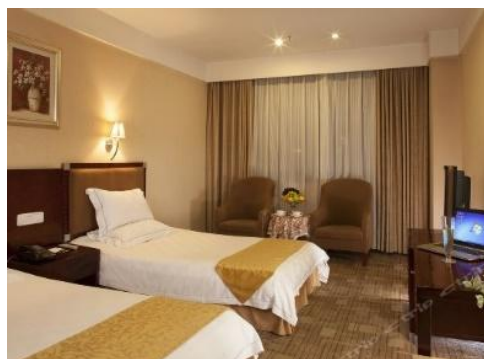
The UESTC Hotel is located at No.2, Section 2, North Jianshe Road, Chengdu. Room options range from single rooms to suites. Room rate per night: ¥ 280 - ¥ 480. You may call +86-028-8320-6666 to book your room.



It takes 3 minutes to walk to the workshop venue.

### Hualian Eastern Hotel ★★★

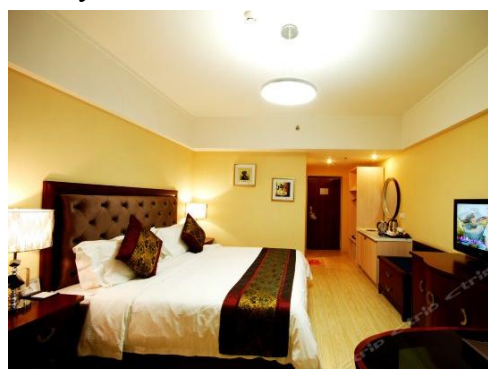
The Hualian Eastern Hotel is located at No.55, Jianshe Road, Chengdu. Room options range from single rooms to suites. Room rate per night: ¥ 260- ¥ 410. You may call +86-028-6853-9666 to book your room.



It takes 15 minutes to walk to UESTC. You may also take Bus No. 27 and reach UESTC in 15 minutes.

### Longhu Haibing Hotel (For Chinese citizens only)

The Longhu Haibing Hotel is located at No.2, Section 3, North Jianshe Road, Chengdu. Room options range from single rooms to suites. Room rate per night: ¥ 278 - ¥ 408. You may call +86-028-8442-7386 to book your room.



It takes 15 minutes to walk to UESTC.

### TianFu Sunshine Hotel ★★★★★

Chengdu Sun Hotel is located in 2 Taisheng Bei Lu, the downtown area, in close proximity to Funan River and the amusement park. It takes 40 minutes to the Chengdu Shuangliu International Airport and 7 minutes to the metro station. Room options range from single rooms to suites. Room rate per night: ¥ 480- ¥ 800. You may call +86-28-86922233 or visit <http://www.tfsunshinehotel.com/en-us/index.html> to book your room.



You may take Bus No. 45 or 61 and reach UESTC in about 35 minutes. You may also take a taxi and reach the workshop venue in about 15 minutes.

Crowne Plaza Chengdu City Center★★★★★

The Crowne Plaza Chengdu City Center locates in 31 Zongfu Street, the heart of Chengdu's Central Business District. It takes 40 minutes to the Chengdu Shuangliu International Airport and 7 minutes to the metro station. Room options range from single rooms to suites. Room rate per night: ¥ 620- ¥ 1200. You may call +86-028-8678-6666 or visit <https://www.ihg.com/hotels/gb/en/reservation>



You may take Bus No. 45 and reach UESTC in 45 minutes. You may also take a taxi and can reach UESTC in about 20 minutes.